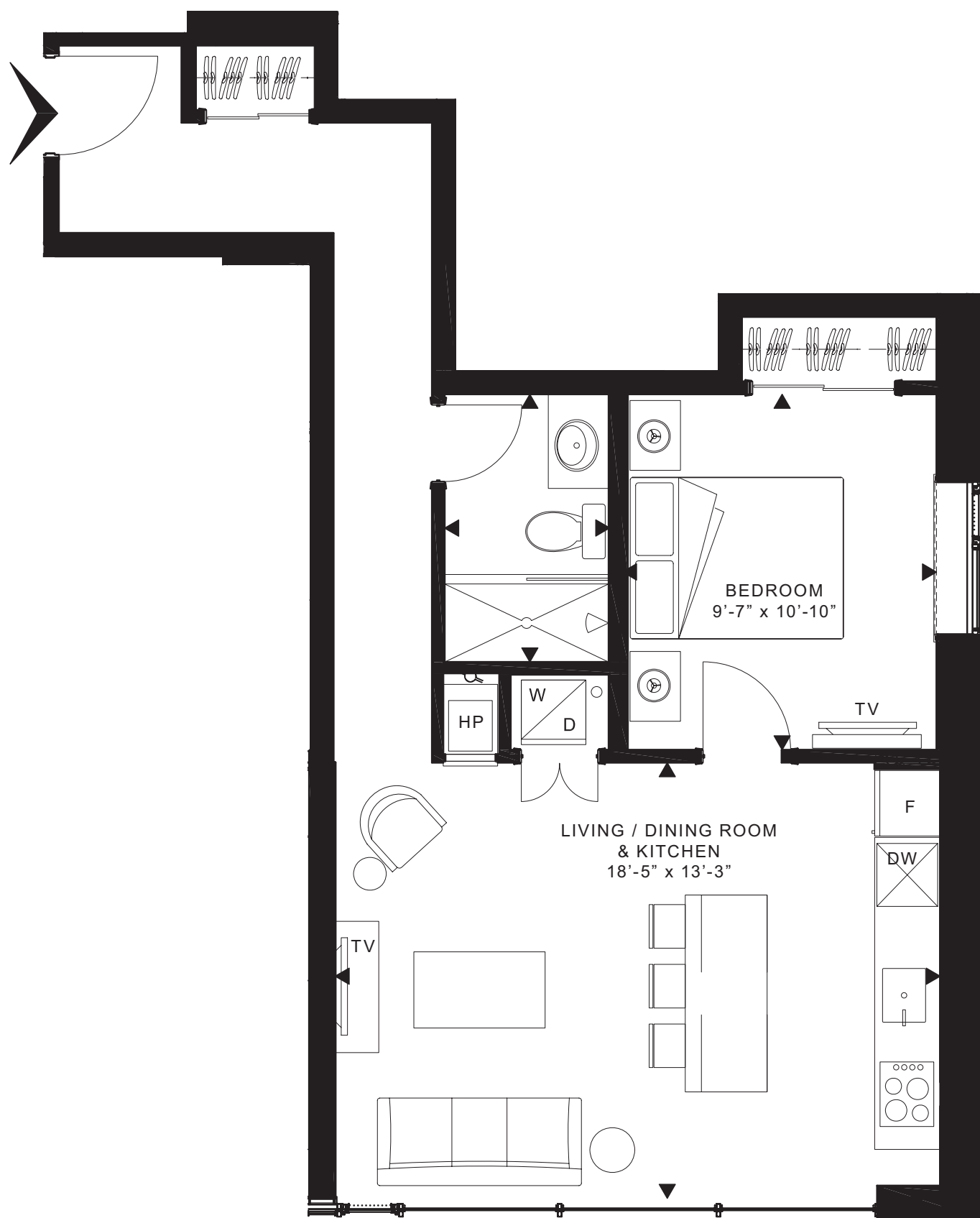


# SOHO RESIDENCES

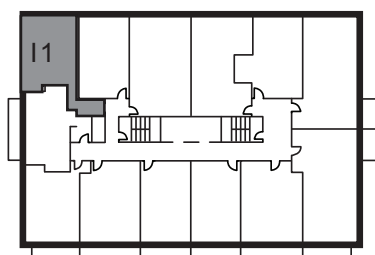
## APARTMENT HOTELS

SUITE 1511 | I | 620 SQ.FT.

1 BEDROOM



LISGAR ST.



300 LISGAR ST, OTTAWA, ON K2P 0E2 • SOHORESIDENCES.CA

**MASTERCRAFT STARWOOD**  
Investment Builders Since 1951

**S O H O**  
L I S G A R

*Dimensions shown on this plan are approximate. Furniture is displayed for illustration purposes only. Balcony and terrace dimensions may vary. E&OE. April 2020.*

